

SPECTATORS and SPECTATOR BOATS

Spectators and coaches are encouraged to join their crews in participating in the event.

Vantage points for those on foot or bike include:

- the TRC precinct (make sure you don't block RQ's view of the start and finish lines)
- the verandah of the TRC function centre
- the Eleanor Schonell (Green) Bridge
- the foreshore along the Brisbane Corso
- Paringa Place Park offers spectators the perfect position to watch crews navigate the turn.

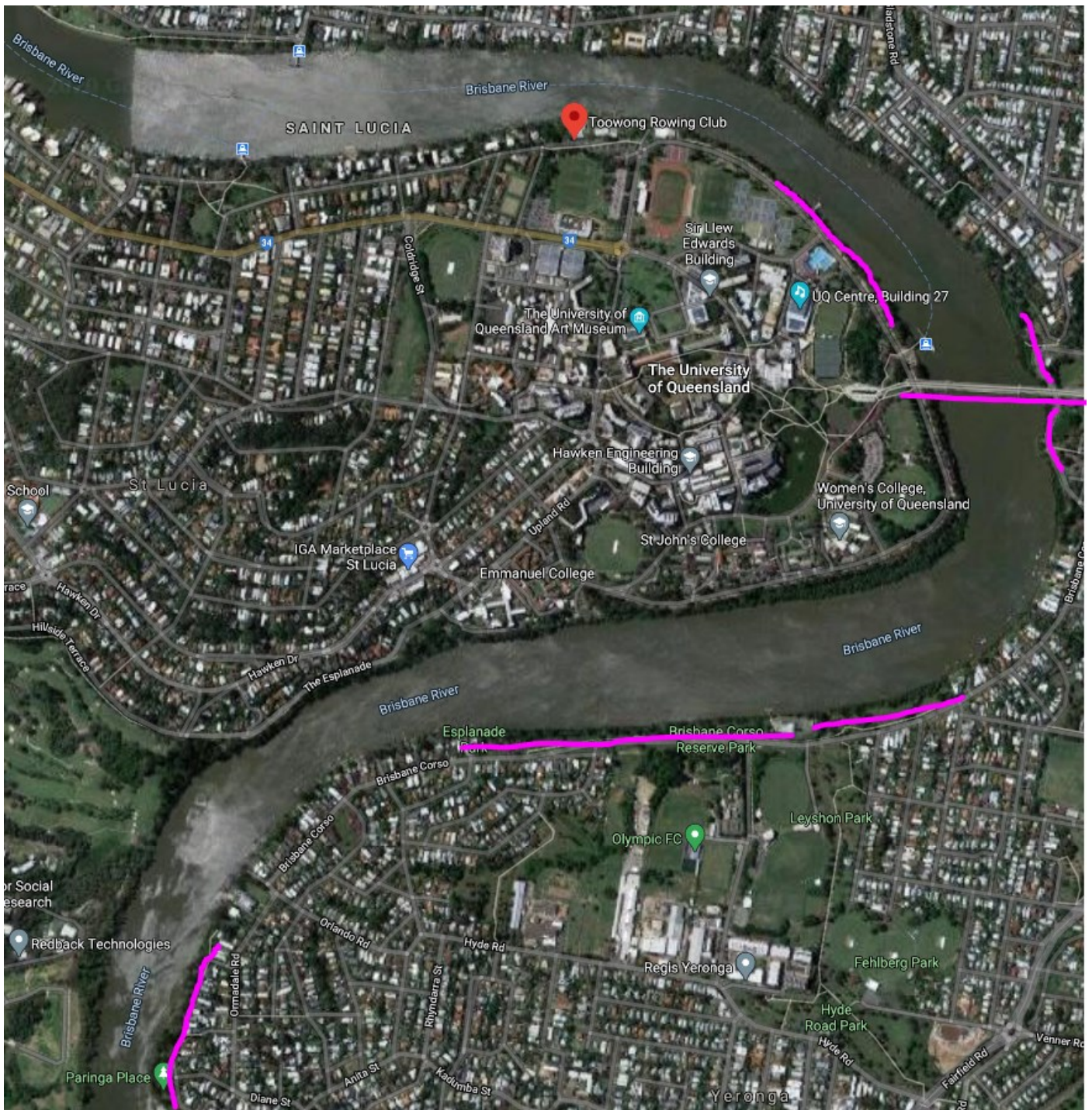


Spectator craft can moor along the course, provided they stay toward the centre of the river, away from the HOTB course.

To ensure a fair and safe race for the rowers, course Marshals and other spectator watercraft should not follow the field until the last racing crew has passed them.



Spectator Vantage Point-Eleanor Schonell Bridge



Vantage points to watch the HOTB race: foreshore at UQ, Dutton Park cemetery, Paringa Place (HOTB turn), and the Brisbane Corso.